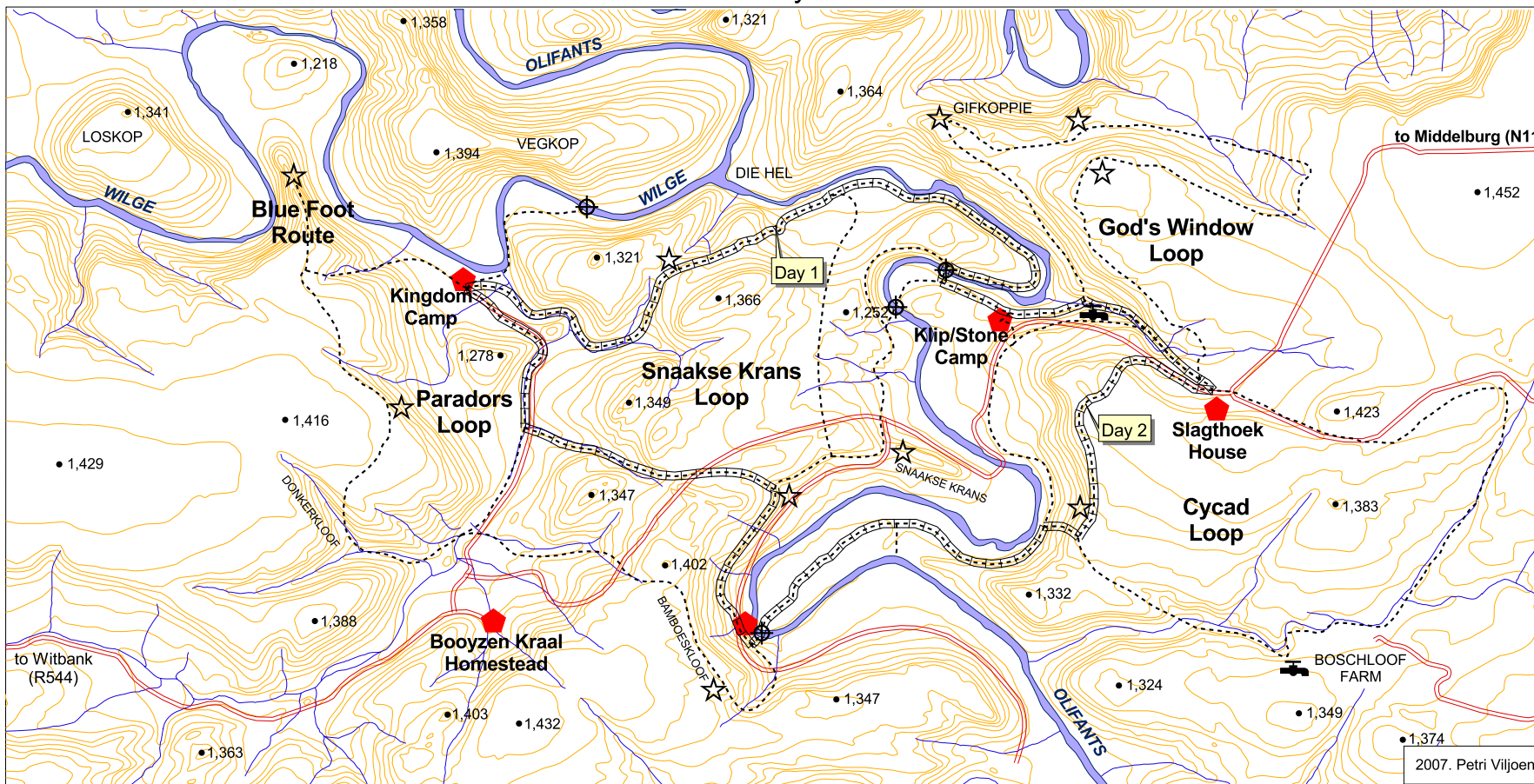


Kingdom Trails

Route: Kingdom Camp - Slagthoek House - Kingdom Camp

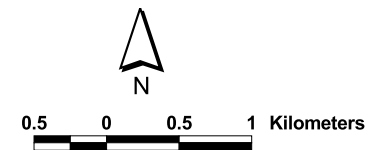
2 Days



- Route: KC_SH_KC
- All trail routes
- View point
- Drinking water
- River crossing
- Camp / house
- Farm road / track
- Stream
- River
- Height
- Relief
- Outline

Note:

River crossings not advisable during the rainy season when crocodiles could pose a problem with the higher water level.



info@kingdomtrails.co.za
www.kingdomtrails.co.za

Kingdom Trails

Hiking Trail Notes

Kingdom Camp – Klip/Stone Camp – Kingdom Camp (2 Days)

Two river crossings **

Kingdom Camp – Grootdraai Hut – Kingdom Camp (2 Days)

Option 1 - no river crossings

Option 2 - two river crossings **

Kingdom Camp – Slagthoek House – Kingdom Camp (2 days)

Day 1 - one river crossing (± 14 km) **

Day 2 - one river crossing (± 18 km) **

Kingdom Camp – 2 Loops

Option 1 - no river crossings (± 12 km)

Option 2 - no river crossings (± 22 km)

Slagthoek House – Klip/Stone Camp – Slagthoek House (2 Days)

No river crossings

Slagthoek House – Grootdraai Hut – Slagthoek House (2 Days)

Day 1

Option 1 - no river crossings (± 12 km)

Option 2 - no river crossings (± 7 km)

Day 2 two river crossings (± 10 km) **

Slagthoek House – 2 Loops

Option 1 - Cycad Loop; no river crossings (± 11 km)

Option 2 - God's Window Loop; no river crossings (± 12 km)

** River crossings are not advisable during the summer months (rainy season). Crocodiles are present in the rivers and pose a potential danger when the river flow is high. Therefore these specific hiking routes are seasonal and cannot be used year-round. All other hiking routes, however, can be used throughout the year.

info@kingdomtrails.co.za
www.kingdomtrails.co.za

Disclaimer

Although Kingdom Trails, Kingdom Nature Reserve and Webmaster believe that the information contained in this web site and downloadable attachments is reliable and accurate, Kingdom Trails, Kingdom Nature Reserve and Webmaster do not warrant that any information contained herein is complete or correct, and you shall not be entitled to place any reliance on the information contained in this web site for any purpose. This web site also includes links to other web sites. Kingdom Trails, Kingdom Nature Reserve and Webmaster assume no responsibility for the content of such web sites. Kingdom Trails, Kingdom Nature Reserve and Webmaster shall not be responsible for any loss or damage which may result from the information on this web site, web site attachments, or any other web site linked to it.

Kingdom Trails

Hiking Trails

Hiking trails lead from camp to camp with a good day's hike between each. A three-day hiking trail would start at Kingdom Camp, hiking to *Slagthoek House*; then *Grootdraai Hut* and ending at *Klip/Stone Camp*.

Kingdom Trails offers two main hiking trail routes, each with various options:

A. Kingdom Trail

1. **Snaakse Krans Loop** (13 km)
2. **Paradors Loop** (12 km)
3. **Blue Foot Route** (2 km) – short route

B. Slagthoek Trail

1. **God's Window Loop** (12 km)
2. **Cycad Loop** (11 km)

A suggested two-day hiking trail would overnight at *Klip/Stone Camp* and a hike on to *Grootdraai Hut*. Each hiking trail is approximately 12-14 km (except for the short Blue Foot Route).

Each trail is approximately 12-14 km (except for the shorter Blue Foot Route)

Kingdom Trail

From *Kingdom Camp* there are three trails options:

1. **Blue Foot Route** (± 2 km/ ± 1 hr) - short, easy, relaxing walk on the riverbanks to a huge rock overlooking the distant mountains with the Wilge River below. The route is marked with blue trail foot markers.
2. **Paradors/Donkerkloof Loop** (± 8 km/ ± 4 hrs) - circular route ascending steeply behind camp in a westerly direction to open bushveld. The route also goes through a shady kloof and past a natural fountain surrounded by tree ferns. Mountain zebra and eland are often seen. Typical trees along this route include naboom and proteas. The route is marked with yellow trail foot markers.
3. **Overnight Hike** – Snaakse Kransloop has two possibilities: a hike to (a) *Slagthoek House* or (b) *Grootdraai Hut*. The route is marked with white trail foot markers.
 - a. **Hike to Slagthoek House:** Crossing the Olifants River is necessary for this hike. Route starts with a gentle climb along the banks of a stream before ascending steeply onto the high ridge. There is a magnificent view of the Olifants/Wilge confluence and the path then descends down to the river itself. There are rocks and boulders to negotiate, but the scenery is breathtaking with several rapids and pools for cooling down - especially in the hot summer months. The trail crosses the Olifants River twice and after rain or during the rainy season the current can be quite strong when the river is high.

There are two possibilities: hikers destined for *Slagthoek House* can turn left (distance ± 3 km), or hikers can proceed to *Grootdraai Hut* with the path to the right (distance ± 5 km).

To reach *Slagthoek House* hikers must climb a steep gorge with numerous boulders.

- b. Hike to *Grootdraai Hut*.** From the river crossing the path ascends steeply towards Snaakse Krans which is visible in the distance. It then meanders along the cliff ridge above the Olifants River with spectacular views to the distant large pools. From *Grootdraai Hut* hikers go via Bamboeskloof which ascends to the south through wooded valleys to the upper high plateau linking Paradors Loop with Donkerkloof and *Kingdom Camp*.

Slagthoek Trail

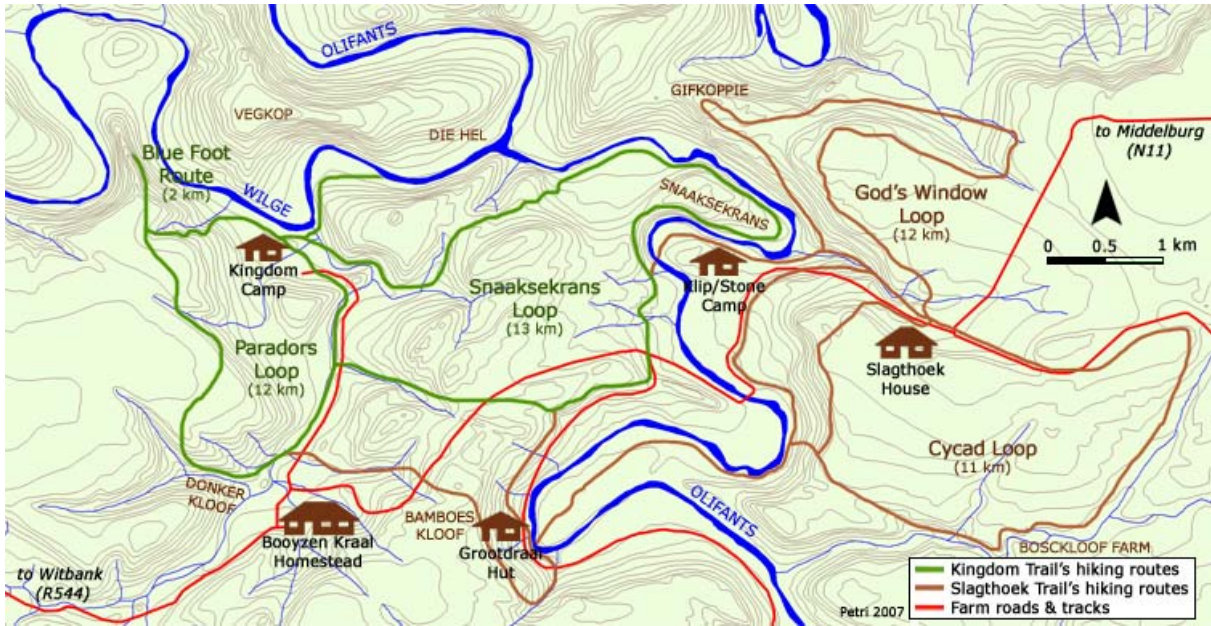
Two circular hiking routes can be followed from *Slagthoek House*:

1. **God's Window Route** (± 12 km): Climbing gently from *Slagthoek House* the track continues to a viewpoint high above the Olifants River. There are magnificent views of the steep cliffs descending vertically down to the Olifants River far below. Eventually the track drops down via Gifkoppie to a large pool in the Olifants River. From there the track continues up a steep rocky ravine back to *Slagthoek House*.
2. **Cycad Route** (± 11 km): A steady walk along an old farm road leads into Boschkloof farm to the south where a permanent, natural stream cascades down numerous waterfalls on its way down to the Olifants River. The route follows its course and eventually ascends through a cycad garden to a series of grass-covered valleys higher up. A link path here connects with the island crossing to *Grootdraai Hut* if preferred. For those opting to return to *Slagthoek House* the path continues with magnificent views to the west of Snaaksekrans and distant hills before descending back to *Slagthoek House*.

There is a link path from *Slagthoek House* to *Grootdraai Hut* connecting the Island Crossing Route (± 6 km).

General Notes:

- Hikers must bring their own sleeping bags, all food and drink. Charcoal and firewood can be supplied if arranged in advance.
 - "Donkey" boilers provide hot water for showers (*Kingdom Camp, Klip/Stone Camp & Slagthoek House*).
 - Game viewing drives may be booked in advance.
 - There are exciting abseiling opportunities. Visitors must bring all their own equipment. Climbing is, as for all other activities, at own risk.
 - Angling is available at additional cost, but must be pre-arranged.
 - River rafting is seasonal. Several large quiet pools interspersed with cataracts and faster flowing water are ideal for summer rafting.
 - River crossings are not advisable during the summer months. Crocodiles are present and pose a potential danger when the river flow is high.
-



Contact:
 Eddie Lombard
 +27 (0)83 229 8709
 edwking@telkomsa.net

www.kingdomtrails.co.za

Orbis Systems

Web & Multimedia Development
 +27 (0)82 3380896

Disclaimer

Although Kingdom Trails, Kingdom Nature Reserve and Webmaster believe that the information contained in this web site and downloadable attachments is reliable and accurate, Kingdom Trails, Kingdom Nature Reserve and Webmaster do not warrant that any information contained herein is complete or correct, and you shall not be entitled to place any reliance on the information contained in this web site for any purpose. This web site also includes links to other web sites. Kingdom Trails, Kingdom Nature Reserve and Webmaster assume no responsibility for the content of such web sites. Kingdom Trails, Kingdom Nature Reserve and Webmaster shall not be responsible for any loss or damage which may result from the information on this web site, web site attachments, or any other web site linked to it.